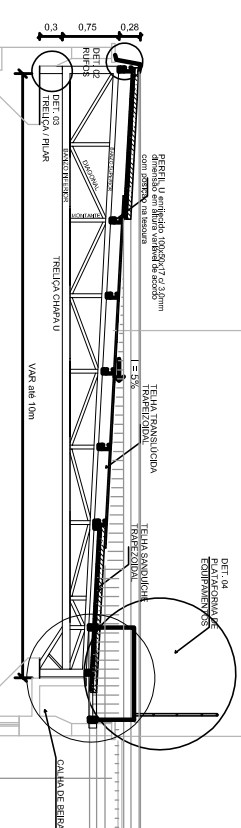
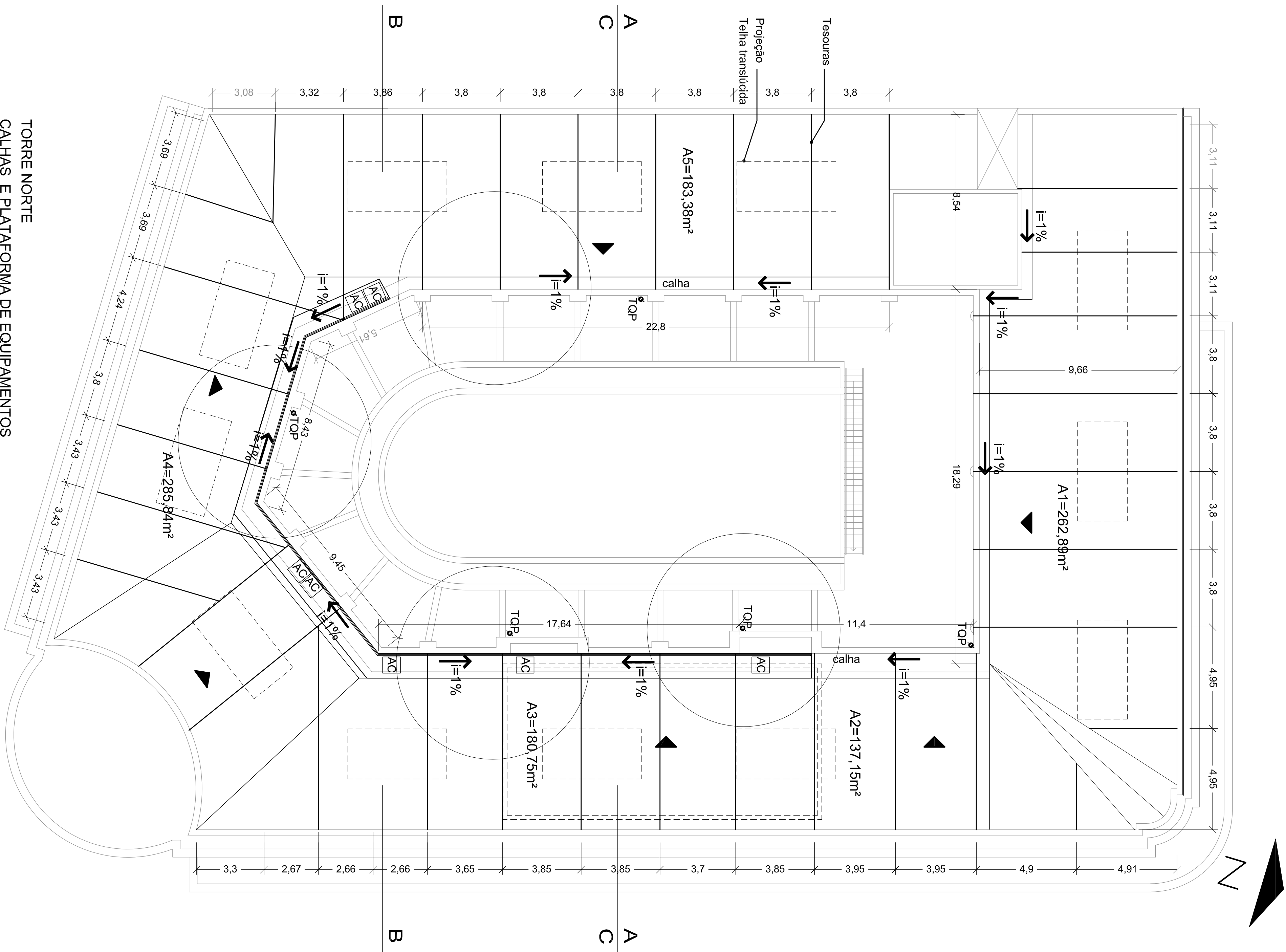
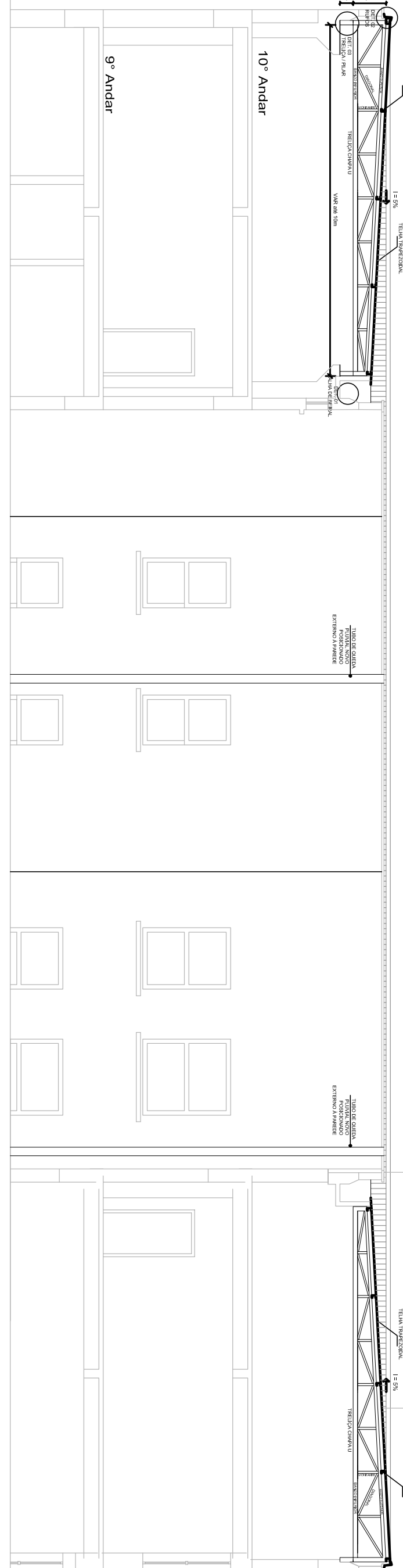


TORRE NORTE
CALHAS E PLATAFORMA DE EQUIPAMENTOS

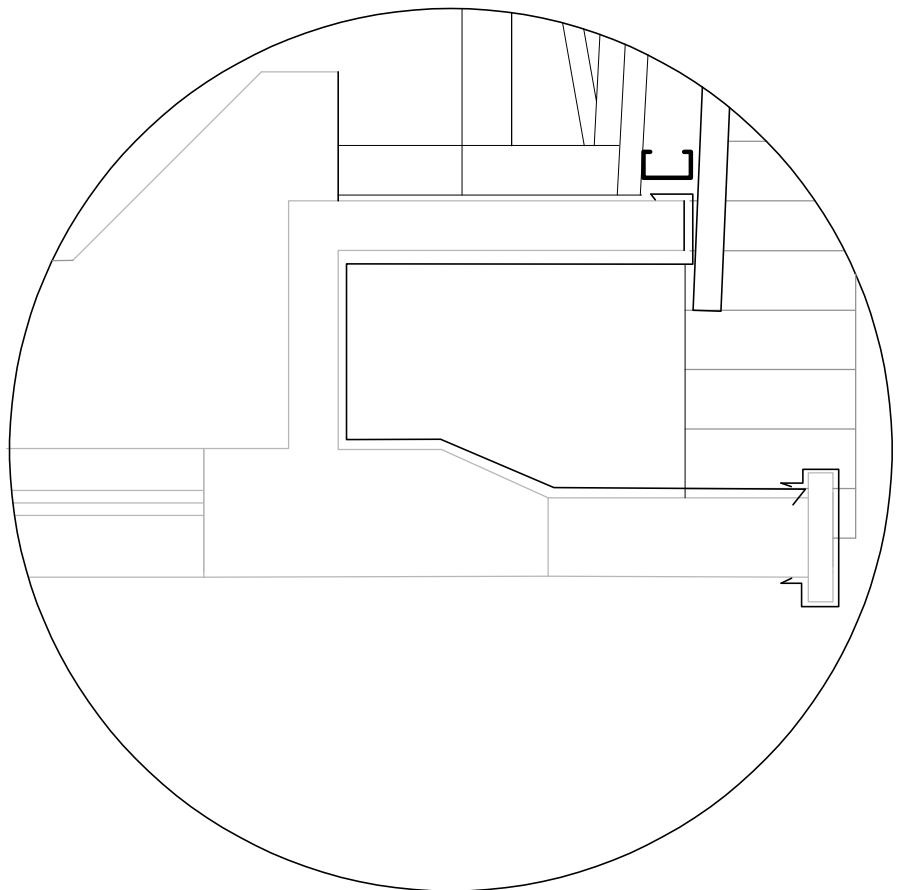
esc 1/125



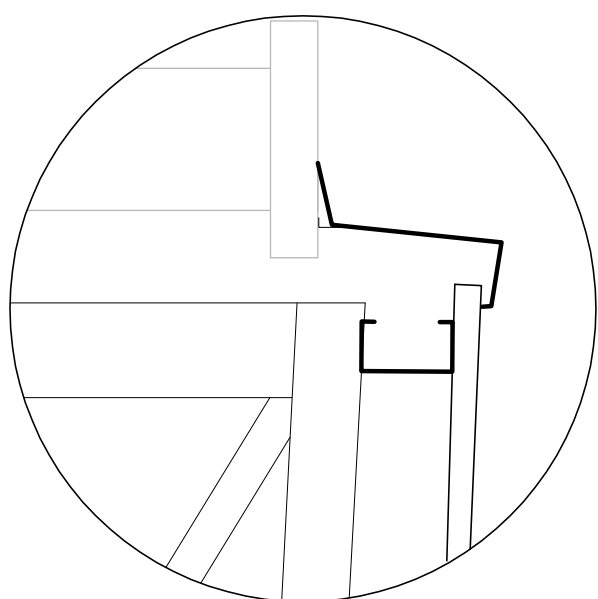
CORTE BB'
esc 1/100



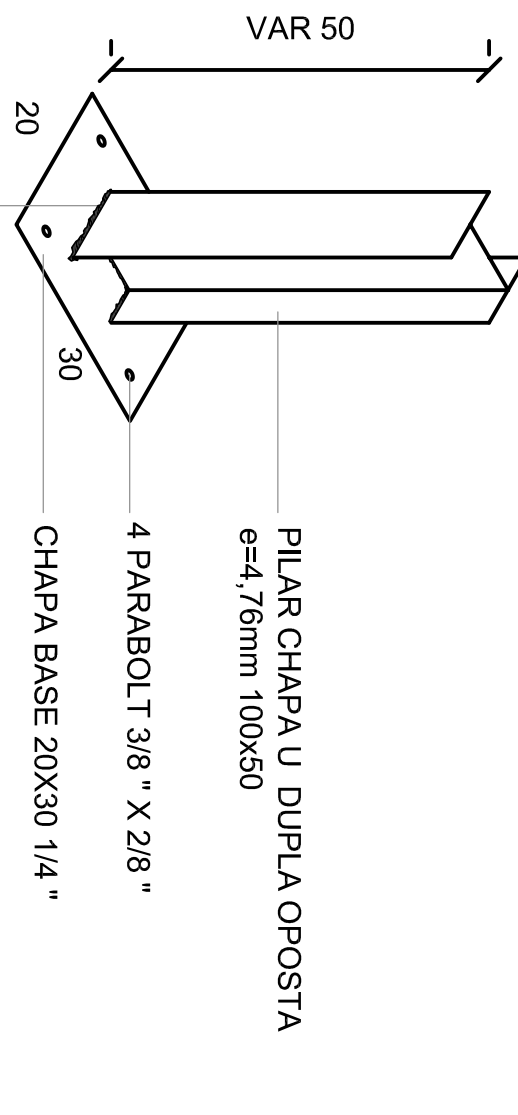
CORTE CC'
esc 1/100



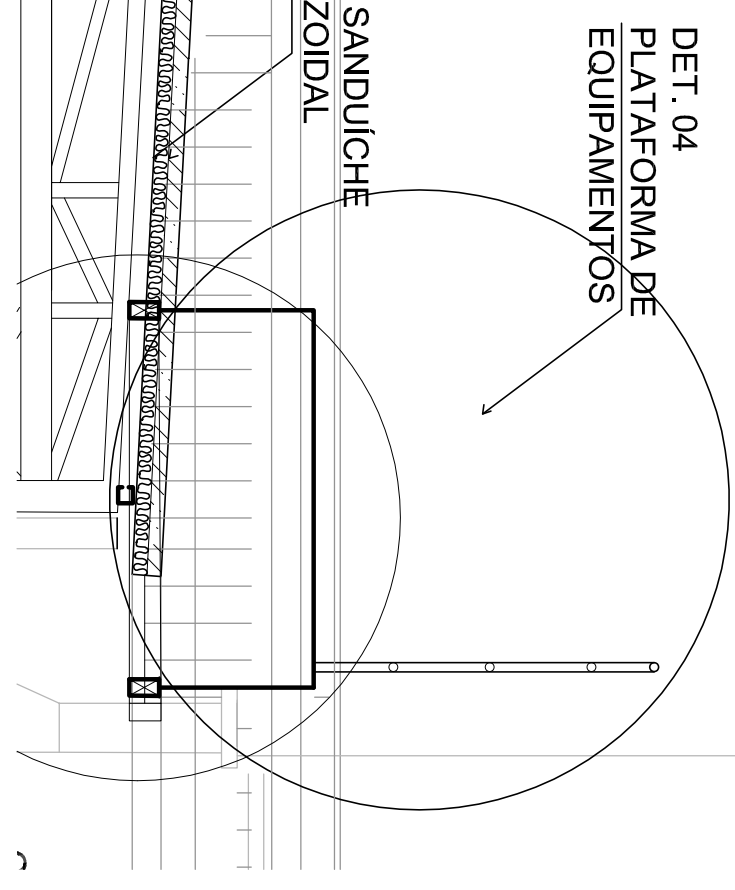
DET. 01
CALHA DE
BEIRAL



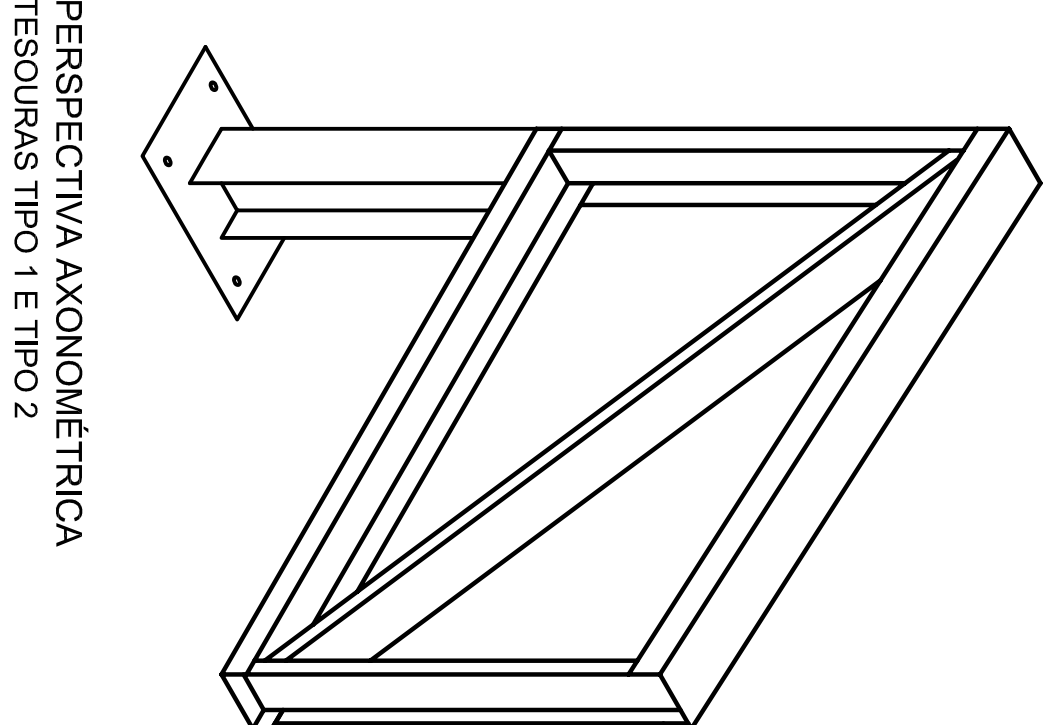
DET. 02
RUFOS



DETALHE 03
FIXAÇÃO TRELIÇA - PILAR (mm)
esc 1:10



DET. 04
PLATAFORMA DE
EQUIPAMENTOS



PERSPECTIVA AXONOMÉTRICA
TESOURAS TIPO 1 E TIPO 2



INSTITUTO FEDERAL DE
EDUCAÇÃO, CIÊNCIA E TECNOLOGIA
RIO GRANDE DO SUL



CAMPUS PORTO
ALEGRE

PROJETO ARQUITETÔNICO

ASSUNTO:

OBRA: REFORMA DA COBERTURA
TORRE NORTE

PROJETO:

CONTEÚDO: PLANTA DE CALHAS
DESCIDAS PLUVIAIS E DETALHAMENTOS

EXECUÇÃO:

ESCALA: 1:100

PROPRIETÁRIO:

DATA: AGOSTO/2018

01